

Recipe Housing™



sustainable
www.sustainable.id.au

Recipe Housing™

1

what

2

why

3

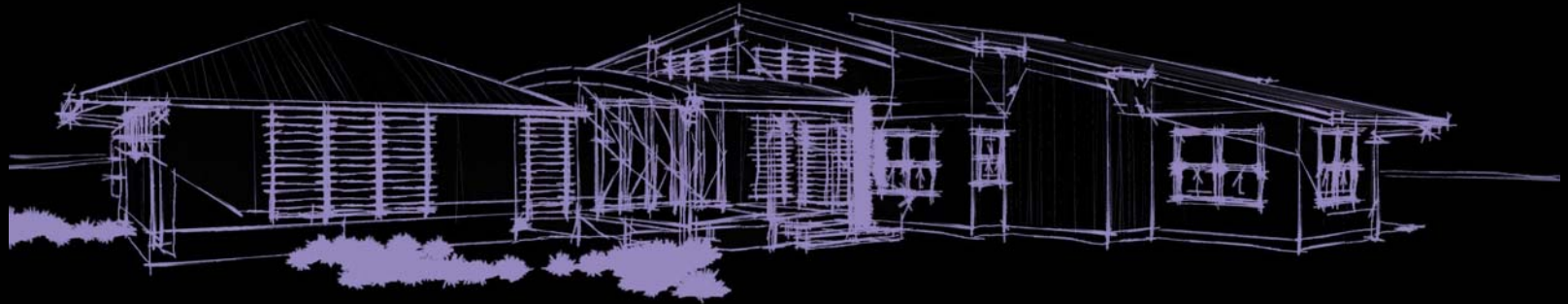
where

4

how

5

plan



sustainable
www.sustainable.id.au



1. Sustainable Living

Improved lifestyles through positive design

Sustainability can be affordable through modern, modular, architectural design

- *low on site cost*
- *low environmental impact*
- *low operational cost*
- *flexible design*
- *fast turnaround*
- *renewable materials*
- *plantation timber*



3. Site Specific Design

Suitable Contexts

- One off homes – on flat or steep slopes
- Urban development projects
- Small Lots, Large Lots or Acreage
- Time pressured projects
- Remote/difficult sites of all sizes/shapes and contours
- Locations where trades people are scarce
- Projects with budget limitations
- Sites with limited access
- Whole community creation



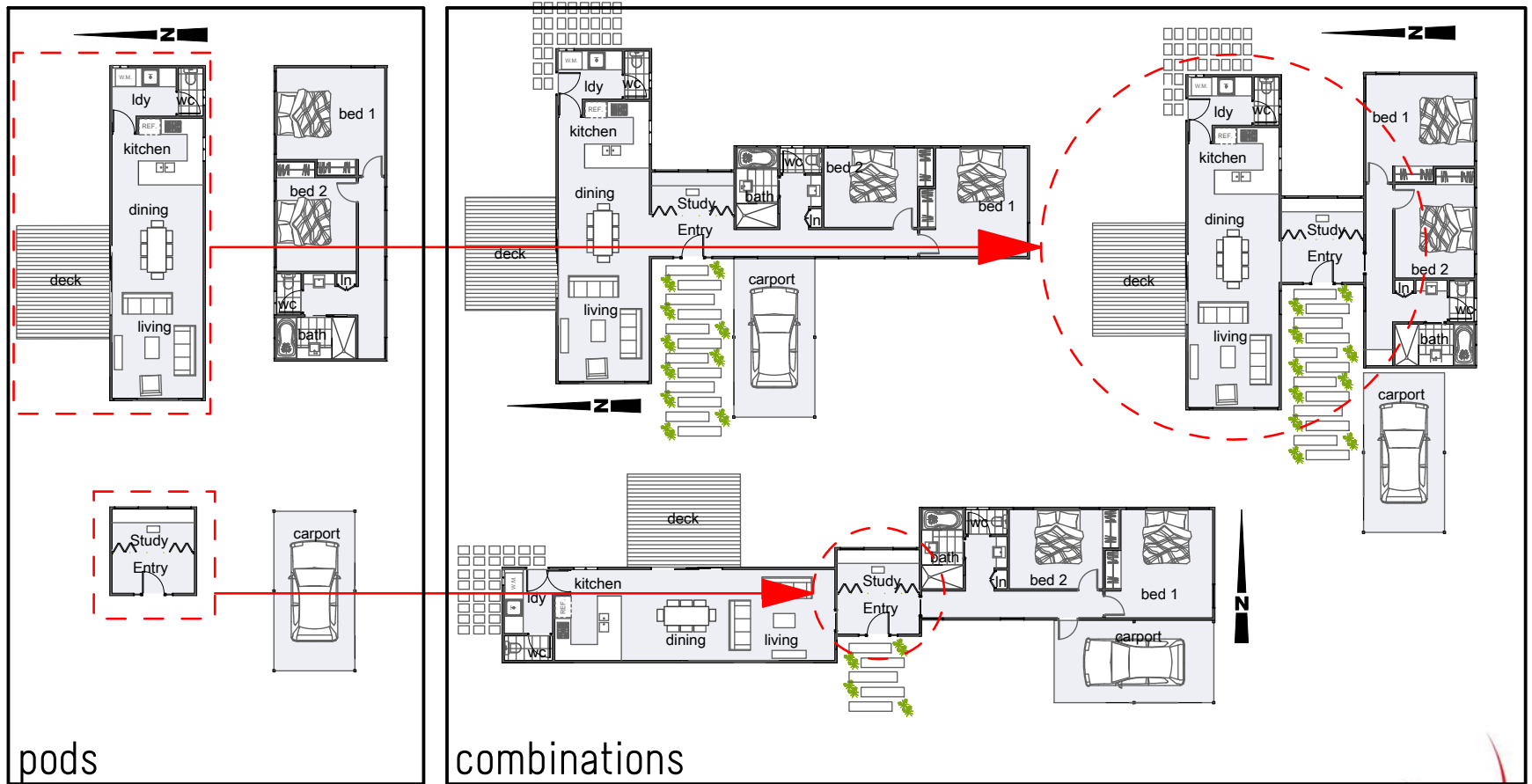
sustainable
ph: (07) 3201 1177 www.sustainable.id.au



4. Modular Design Approach

Spacial Typologies

1. living
2. sleeping
3. wet areas
4. connecting
5. storing



Modules and pods can be arranged in a multitude of ways to create countless, unique variations

sustainable

ph: (07) 3201 1177

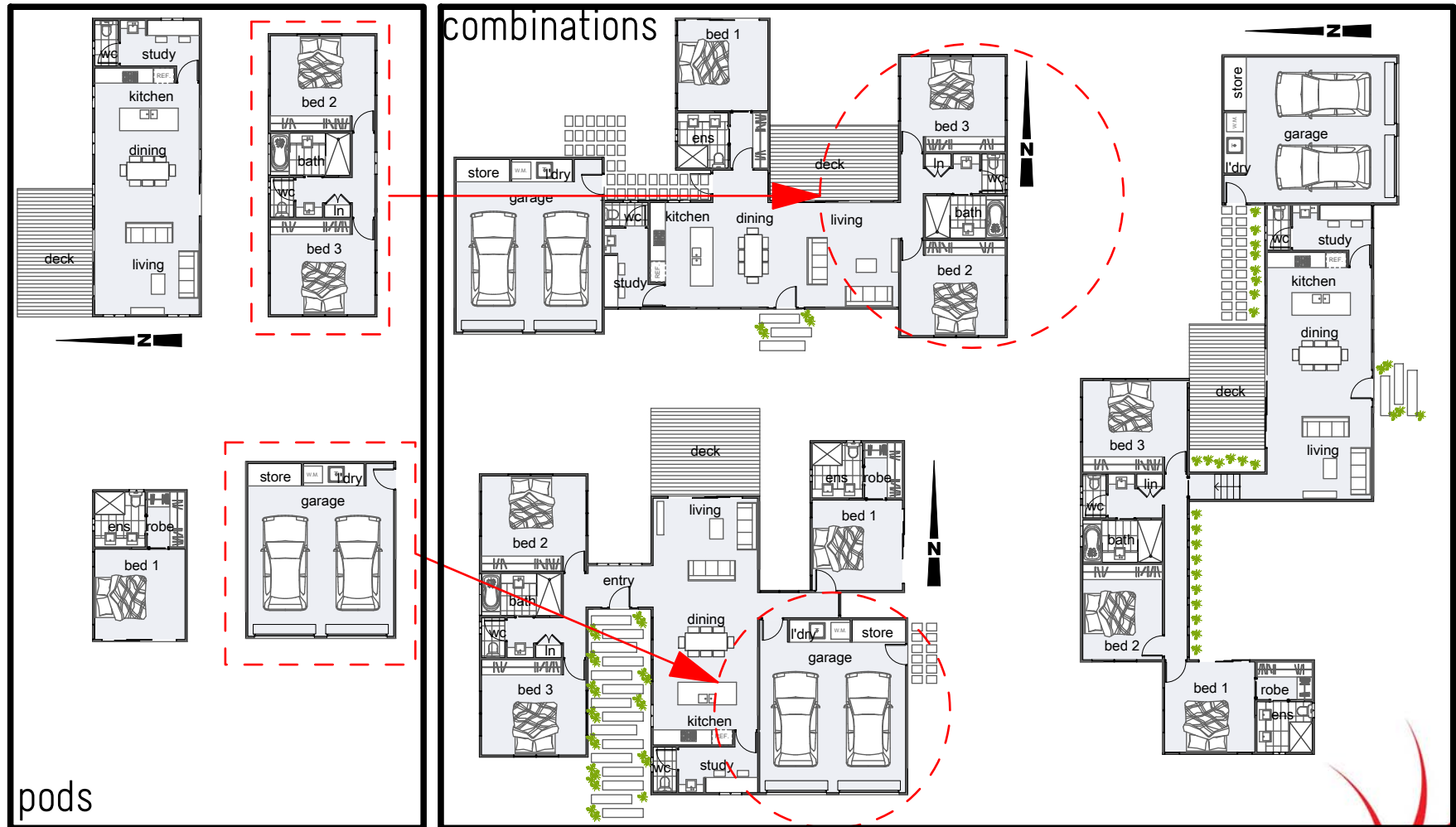
www.sustainable.id.au



4. Modular Design Approach

spacial typologies

1. living
2. sleeping
3. wet areas
4. connecting
5. storing



This creates a wealth of choice yet maintains consistency and efficiency in construction, minimising on site risk and cost

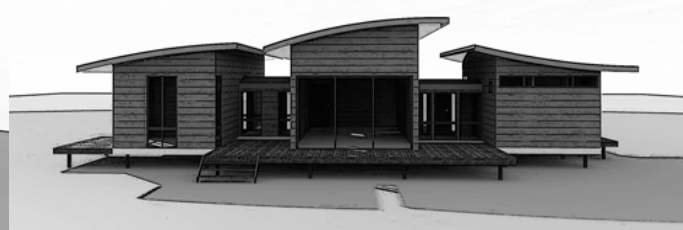
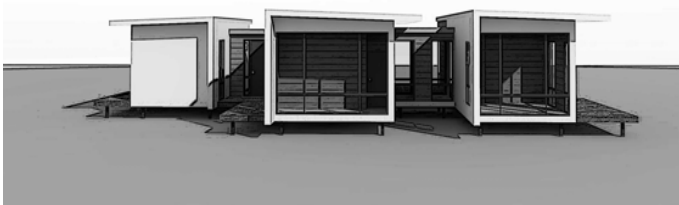
sustainable

ph: (07) 3201 1177

www.sustainable.id.au



4. Same Pods Different Hats



These sketches demonstrate the ease of changing the character of simple dwellings through variation in roof styles

Diversity in elevation - same footprint

Perfect for affordable housing for individuals, whole community/estate development

sustainable

ph: (07) 3201 1177

www.sustainable.id.au



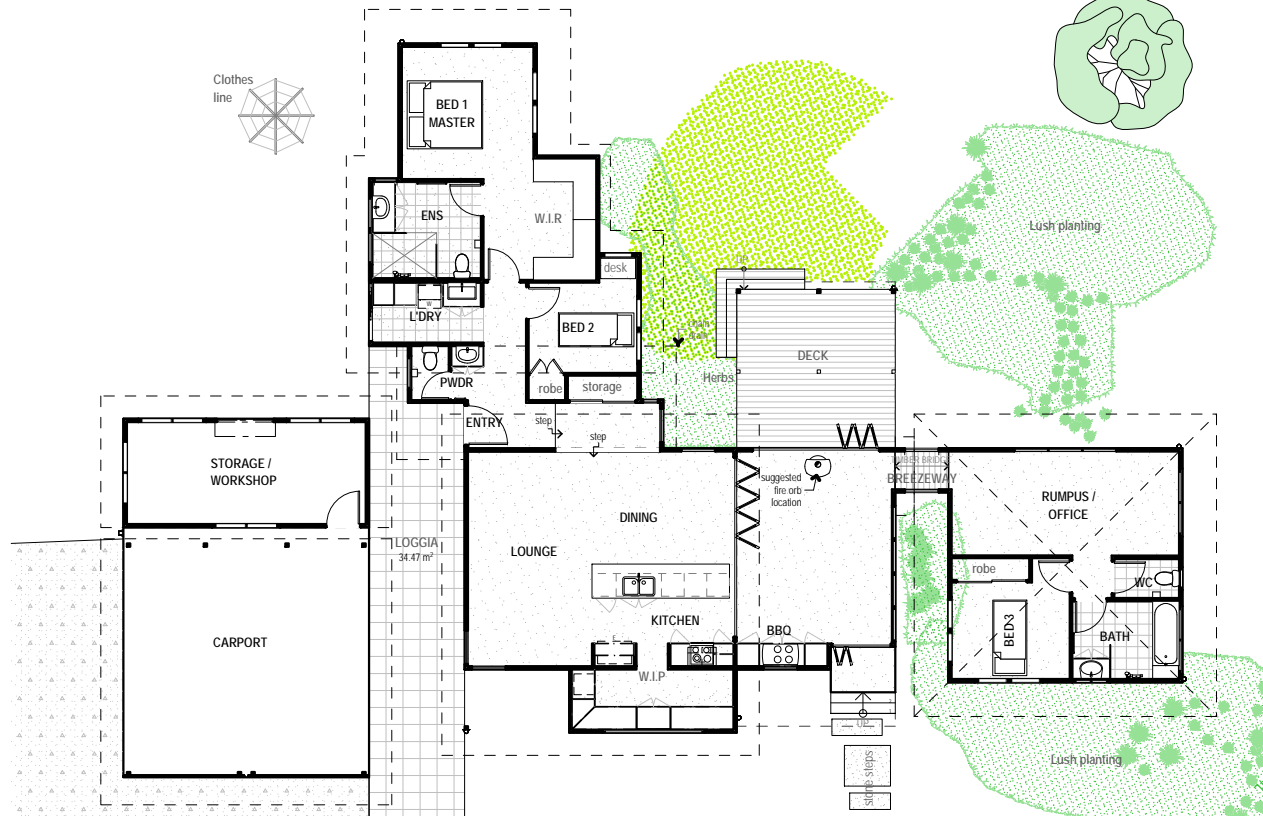
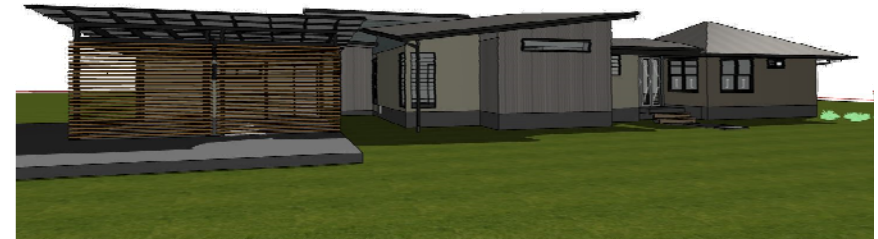
5. Your Project - Your Plan

Project Example



perspective

perspective



plan

The recipe house design philosophy can also apply to more complex and bespoke designs at the client's discretion. The following pages provide examples

sustainable

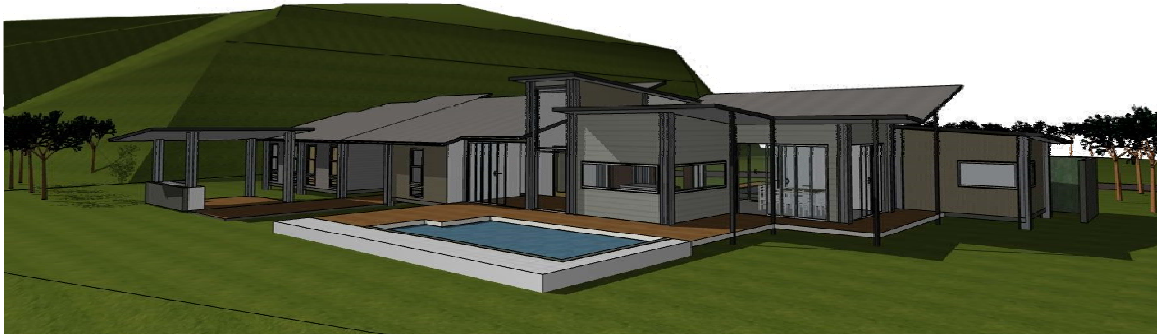
ph: (07) 3201 1177

www.sustainable.id.au



5. Your Project - Your Plan

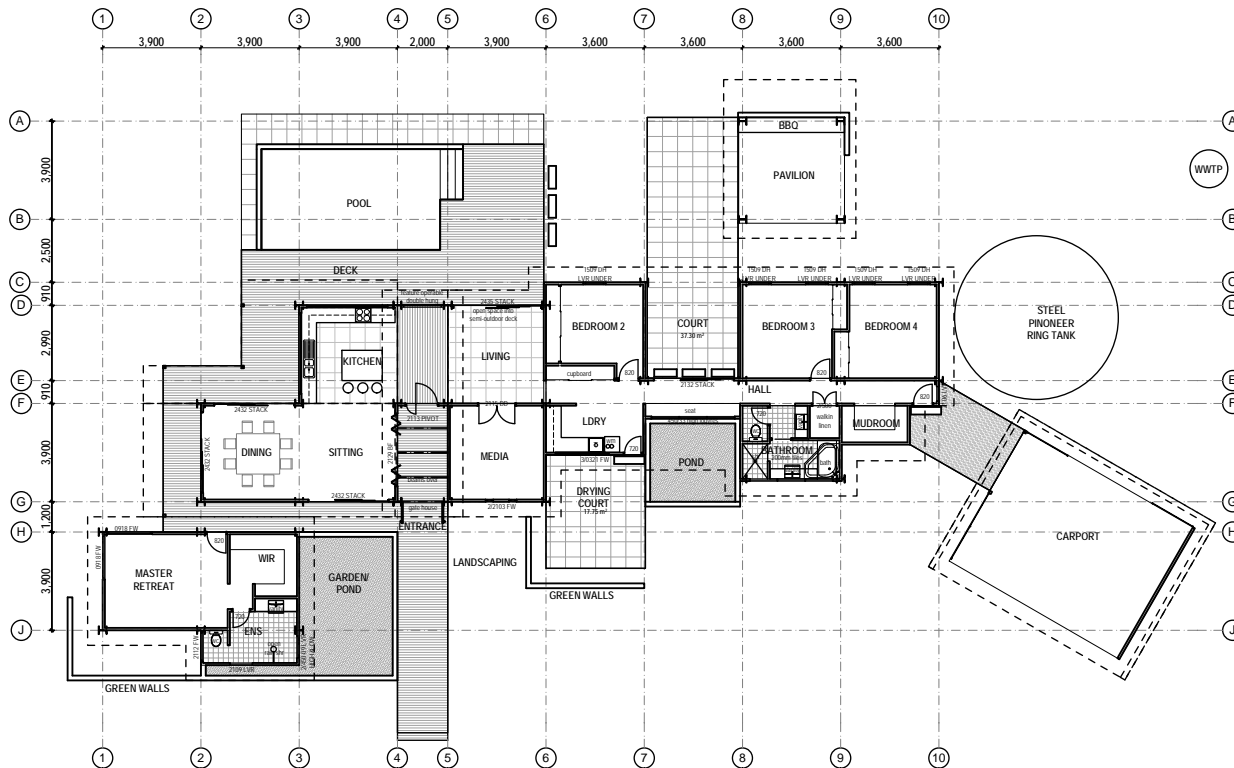
Project Example



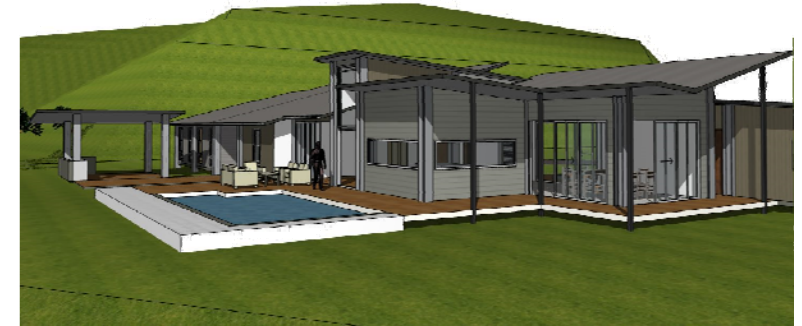
perspective



perspective



plan



A grided, modular design derived from standard steel sizes, reducing cost and waste

sustainable

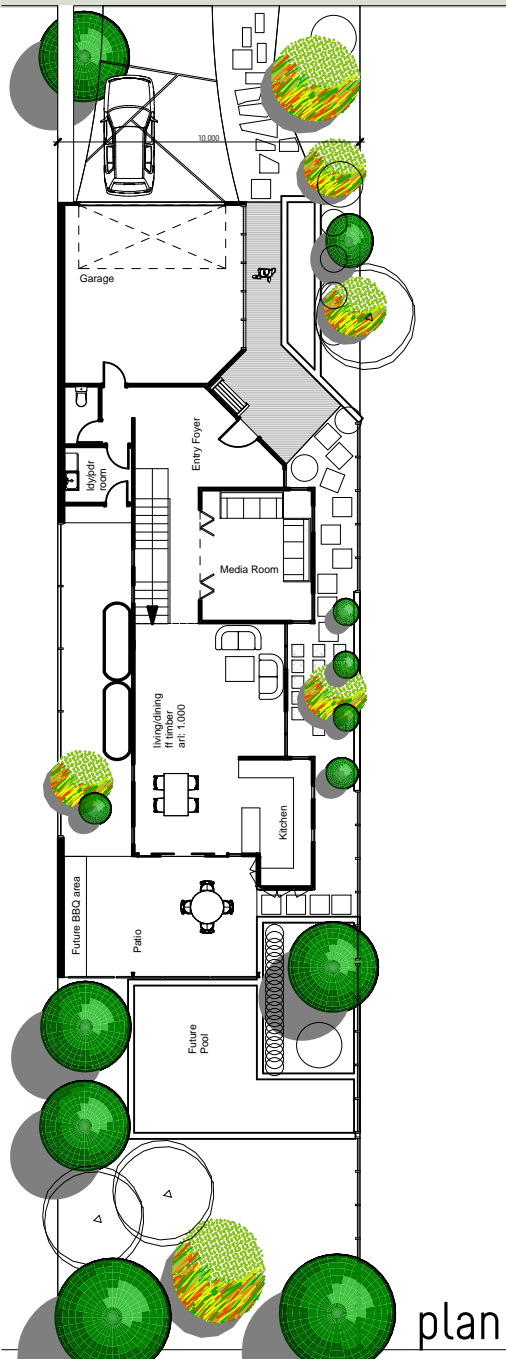
ph: (07) 3201 1177

www.sustainable.id.au



5. Your Project - Your Plan

Project Example



plan

perspective



perspective



A recipe house
solution to an inner
city small lot

sustainable

ph: (07) 3201 1177

www.sustainable.id.au

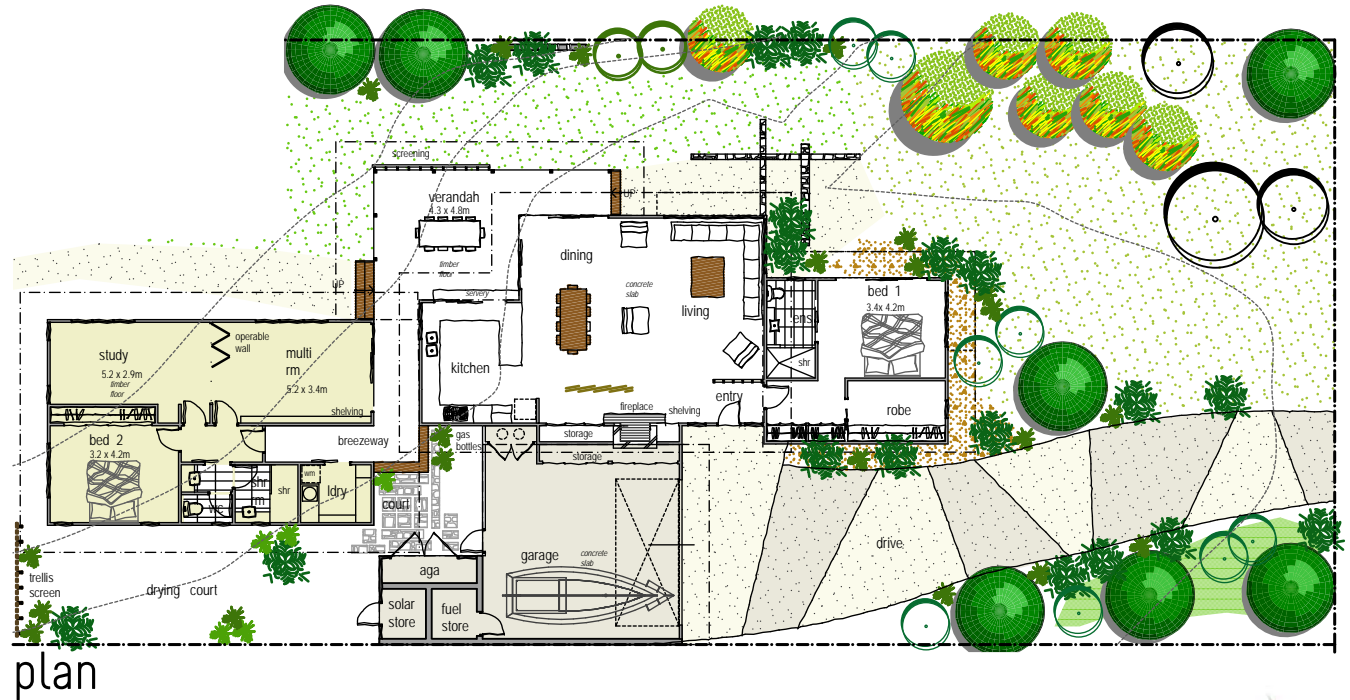
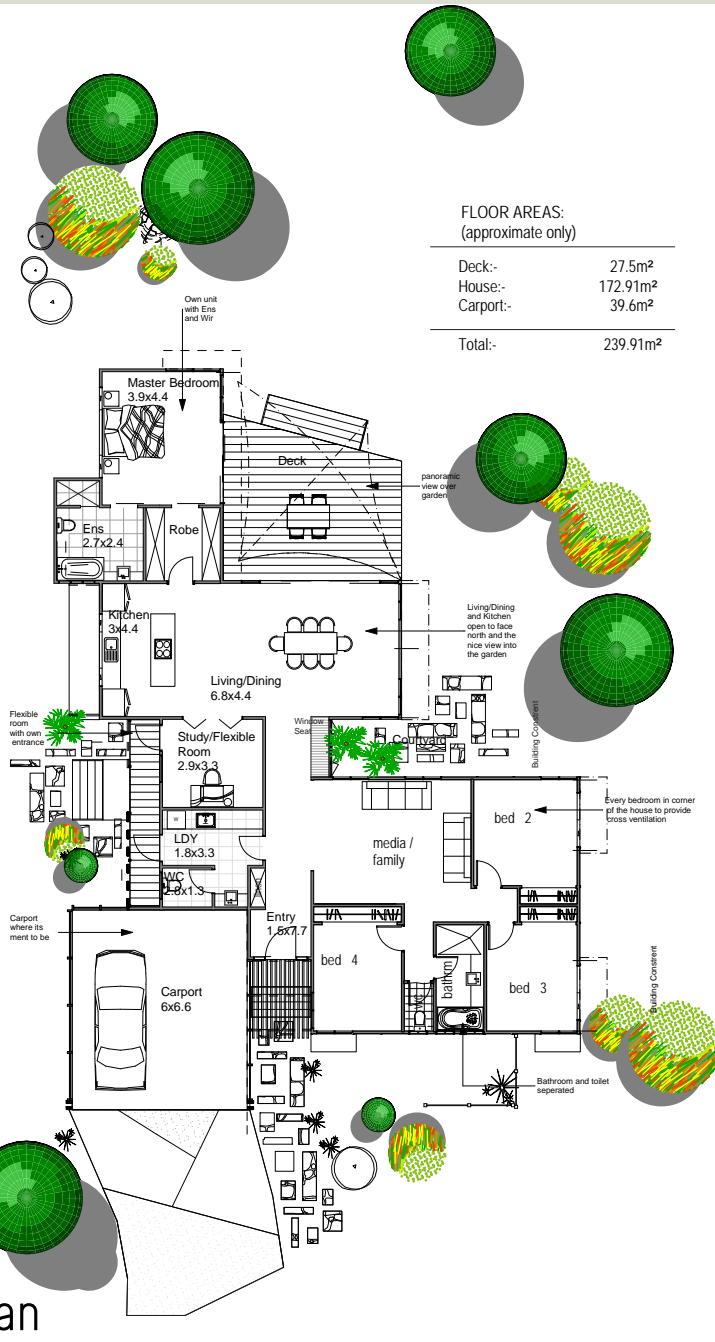


5. Your Project - Your Plan

Project Example

FLOOR AREAS:
(approximate only)

Deck:-	27.5m ²
House:-	172.91m ²
Carport:-	39.6m ²
Total:-	239.91m²



sustainable
ph: (07) 3201 1177
www.sustainable.id.au



Awards & Credentials

Awards & Accreditation

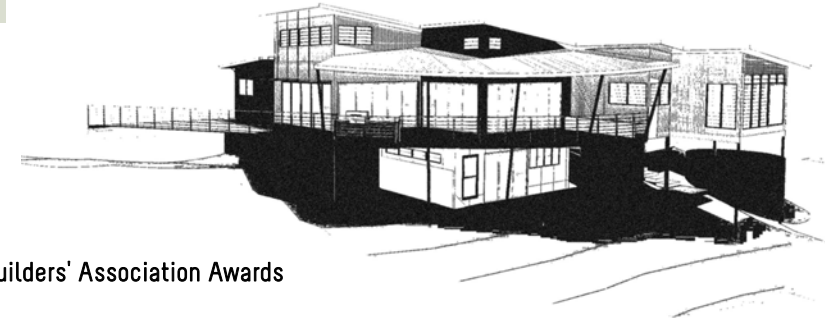
(Awards won prior to 1996 not shown)

Housing Industry Association Awards (National)

- 2003 - Winner Australian Greensmart Building of The Year - Brookwater Design Studio
- 2003 - Runners Up - Australian Energy Efficient Home of the Year - Brookwater Design Studio
- 2003 - Runners Up - Australian Greensmart Professional of the Year - Brookwater Design Studio

Housing Industry Association Awards (Other)

- 2001 - Runners Up - Display Home -
- 2002 - Winner Display Homes Valued over \$200 000 - Brookwater Design Studio
- 2002 - Winner Display Home of the Year - Brookwater Design Studio
- 2002 - Winner Energy Efficient Home of the Year - Brookwater Design Studio
- 2002 - Winner South East Queensland Home of the Year - Brookwater Design Studio
- 2002 - Winner Queensland Energy Efficient Home of the Year - Brookwater Design Studio
- 2004 - Winner Brisbane/Gold Coast Custom Built Home valued \$350,000 to \$500,000 - McLaughlin Residence
- 2004 - Winner Brisbane/Gold Coast Most Innovation Use of Steel - McLaughlin Residence
- 2005 - Silver Brisbane/Gold Coast Energy Efficient Home of the Year - Brinsmeads Residence
- 2005 - Silver Brisbane/Gold Coast Custom Built House valued over \$750,000.00 - McIntosh Residence
- 2005 - Silver Brisbane/Gold Coast Custom Built House valued between \$250,000.00 - \$300,000.00 - Treehouse
- 2005 - Winner Energy Efficient Home of the Year Brisbane/Gold Coast Region- McIntosh Residence
- 2005 - Winner Energy Efficient Home of the Year Queensland - McIntosh Residence
- 2006 - Best Individual Home Valued \$550,000 - \$850,000 - Miller Gampe
- 2006 - Excellence in Building for Queensland Climate - Miller Gampe
- 2009 - Winner GreenSmart Energy Efficiency Award - Boonah (HIA-CSR Brisbane / Toowoomba Housing Awards)
- 2010 - Finalist Queensland GreenSmart Energy Efficiency Award - Bardon (HIA-CSR Queensland Housing Awards)



Queensland Master Builders' Association Awards

- 1996 - Contract House
- 1996 - House for Sloping Site -
- 1996 - Best Use of Colourbond Steel Roofing
- 1996 - Best Use of Site and Outdoor Living
- 1996 - House for Sloping Site
- 1997 - Contract House
- 1997 - Contract House
- 1998 - Best Contemporary House
- 1998 - Most Innovative Use of Lightweight Composite Construction
- 1998 - Timber Housing
- 1998 - Most Innovative Use of Glass
- 1998 - Most Innovative Use of Colourbond Steel Roofing - O'Malley Bar - Ipswich Jets
- 1999 - Refurbishment/Renovation up to \$2 million - Cecil Hotel Ipswich Jets
- 2001 - Housing for Sloping Site up to \$250 000
- 2001 - Individual Home between \$300000 - \$400000 - Lot 1 George Holt Drive
- 2001 - Most Innovative Use of Steel Roofing - Lot 1 George Holt Drive
- 2002 - Individual Home Valued \$300 000 - \$400 000 - Lot 2 George Holt Drive
- 2002 - Most Innovative Use of Steel Roofing - Lot 2 George Holt Drive
- 2002 - Housing for Sloping Site over \$250 000 - Lot 2 George Holt Drive
- 2004 - Best Design for the Queensland Climate - Brookwater Design Studio
- 2004 - Best Display Home over \$380,000 - Brookwater Design Studio
- 2004 - Best Individual Home Valued \$450,000 - \$550,000 - McLaughlin Residence
- 2005 - Best Individual Home Valued \$400,000 - \$600,000 - Brinsmeads Residence
- 2005 - Best Individual Home Valued \$600,000 - \$850,000- McIntosh Residence
- 2005 - Best Low Rise Multi-Residential Housing (Duplexes & Townhouses) up to \$1.5 Million - Hartfield Drive Development



sustainable
ph: (07) 3201 1177 www.sustainable.id.au

